

WELCOME TO BLACK AMERICAN PLAYWRIGHTS!



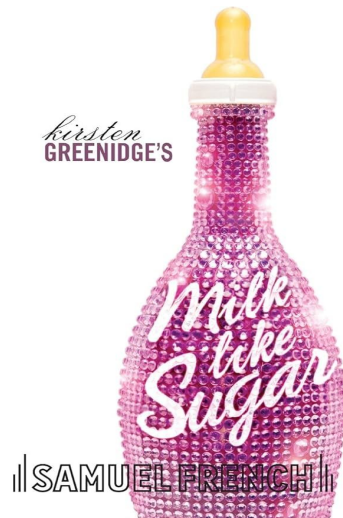
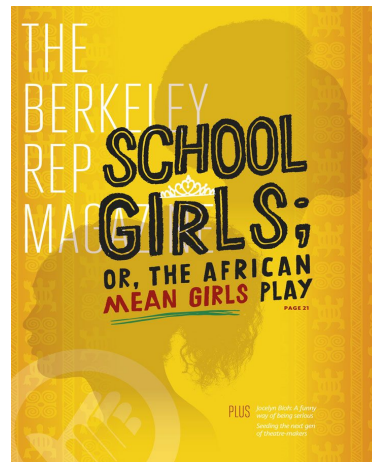
Sit in any seat and immediately start on the DO NOW.
DATE: Friday, 10/11/24

LET'S SHARE DO NOW RESPONSES...

★ Similarities between *School Girls* and *Milk Like Sugar*?

SOCRATIC SEMINAR

- ★ Everyone must speak at least once.
- ★ In order to speak, you must be holding the *talk-topus*.
 - To obtain talk-topus, raise your hand and wait for a fellow colleague to toss it to you.



GRADING...

- ★ 50 points for discussion
 - You must refer to a specific example from one or both plays.
 - You must make a connection, inference, or thought-provoking response about the topic being discussed.
- ★ 50 points for Socratic Seminar Notes (worksheet)
 - 15 points for Theme 1 chart
 - 15 points for Theme 2 chart
 - 20 points for final paragraph

Socratic Seminar Notes

Directions: We are going to have a Socratic Seminar (discussion) comparing major themes in *School Girls; or, the African Mean Girls Play* by Jocelyn Bioh and *Milk Like Sugar* by Kirsten Greenidge.

During our discussion, use this graphic organizer to dictate and highlight key discussion points. You will turn this in as part of your grade!



Theme 1: Group Loyalty & Peer Pressure		
Common message in both plays	How this is communicated in <i>School Girls</i> (examples)	How this is communicated in <i>Milk Like Sugar</i> (examples)

Theme 2: Self-Esteem and Insecurities

Common message in both plays	How this is communicated in <i>School Girls</i> (examples)	How this is communicated in <i>Milk Like Sugar</i> (examples)

In the space below, discuss the following question: How do both of these plays address the pressures of conforming among young black women?
